

MONTHLY MEMBERSHIP PROGRESS REPORT

District 13 OH2

Results as of: 11/30/2025

GMT:

LOCATION OHIO

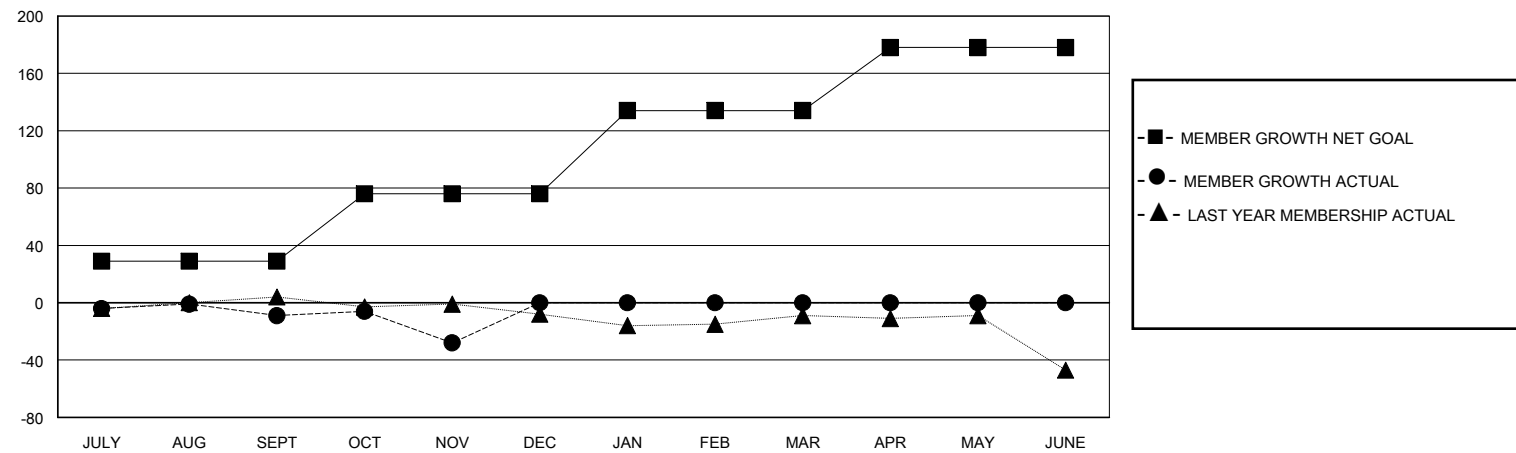
GMT CA

Clubs				Members			
RESULTS FOR 2025-2026				RESULTS FOR 2025-2026			
QUARTER	NEW CLUB GOAL	NEW CLUBS	DROPPED CLUBS	QUARTER	MEMBER GROWTH NET GOAL	MEMBER GROWTH ACTUAL	DROPPED MEMBERS ACTUAL (including transfers)
JULY/AUG/SEPT	0	0	0	JULY/AUG/SEPT	29	33	38
OCT/NOV/DEC	1	0	0	OCT/NOV/DEC	47	15	33
JAN/FEB/MAR	0	0	0	JAN/FEB/MAR	58	0	0
APR/MAY/JUNE	0	0	0	APR/MAY/JUNE	44	0	0

GOALS AND ACTUAL NEW CLUBS CUMULATIVE



GOALS AND ACTUAL MEMBERS CUMULATIVE



DROPPED CLUBS: 0	21 CLUBS OF 53 ADDED 1 OR MORE NEW MEMBERS	<u>GENDER DISTRIBUTION</u> MALE 1,069 (67.66%) FEMALE 511 (32.34%)
<u>DROPPED MEMBERS</u> DECEASED 12 CLUB CANCELLED 0 OTHER 59 TOTAL 71	<a href="#">CLICK HERE FOR CUMULATIVE MEMBERSHIP DATA</a>	TOTAL FAMILY UNIT MEMBERS 381 FAMILY MEMBERS PAYING HALF DUES 194